

Key to tags

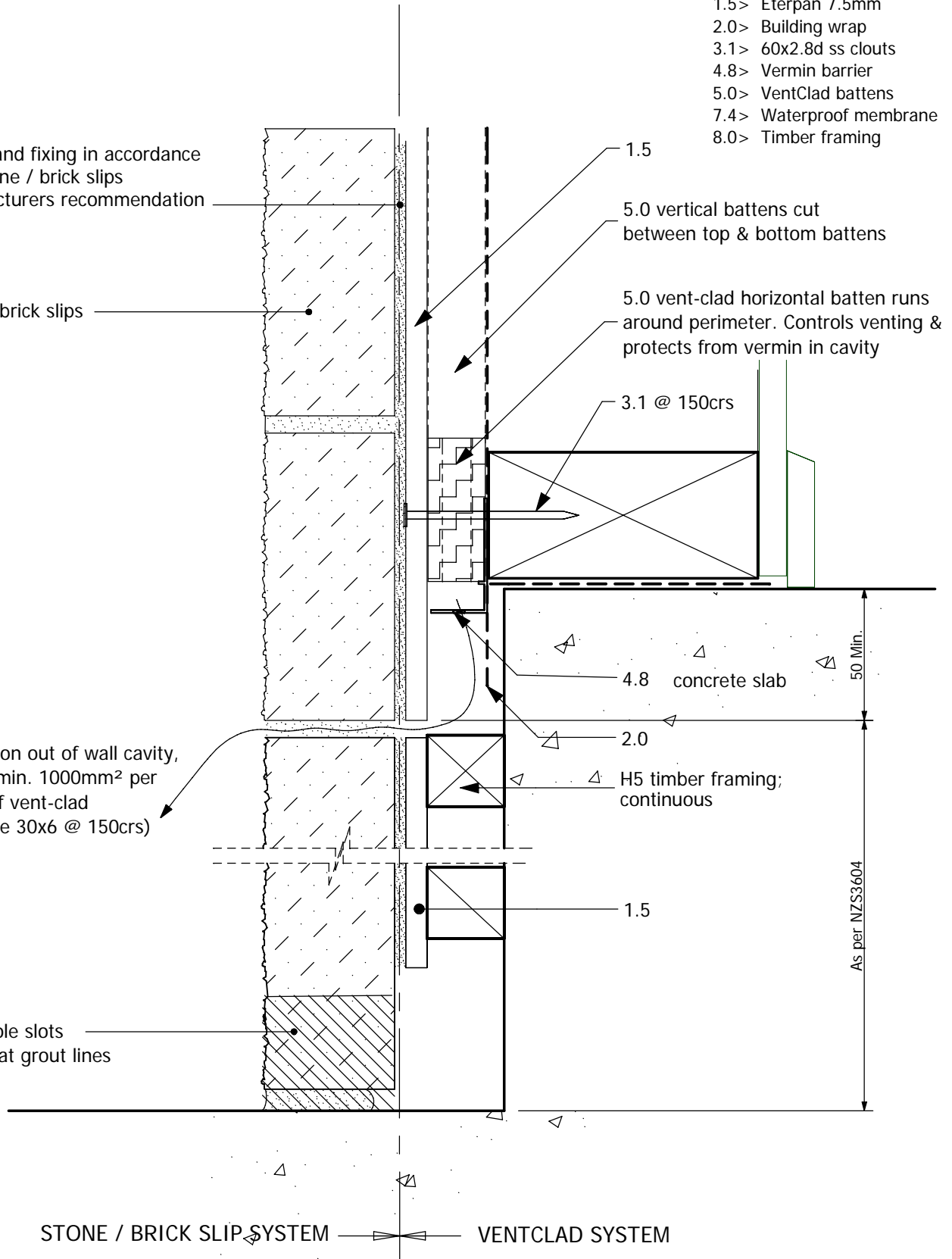
- 1.5> Eterpan 7.5mm
- 2.0> Building wrap
- 3.1> 60x2.8d ss clouts
- 4.8> Vermin barrier
- 5.0> VentClad battens
- 7.4> Waterproof membrane
- 8.0> Timber framing

Primer and fixing in accordance with stone / brick slips manufacturers recommendation

Stone / brick slips

Ventilation out of wall cavity, to give min. 1000mm² per meter of vent-clad (example 30x6 @ 150crs)

weep hole slots formed at grout lines



STONE / BRICK SLIP SYSTEM ————— VENTCLAD SYSTEM

Vertical section through sill at slab

VentClad

Ventilated Cladding System - Stone / Brick Slips 50Kg Load

Scale:

1:2

Date:

1/06/05



freephone 0800 2255 727

North Island: 31 Arrenway Drive, Albany. PO Box 302202 NH1330

tel: 09 477 0960, fax: 09 477 0961

South Island: 42C Maces Rd, PO Box 38021 Christchurch 9

tel: 03 384 4023, fax 03 384 4026

DWG. No.

VC.6.4.17